

MONARCH



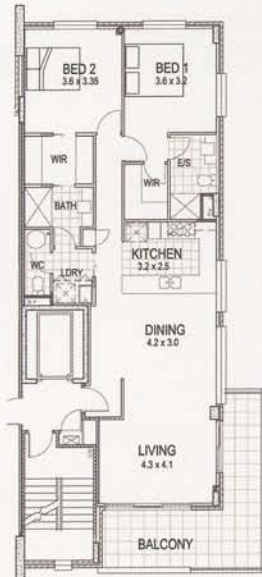
A world away with the city in sight...



One Bedroom Apartment
66.8m² of living



One Bedroom + Study Apartment
66.8m² of living



Two Bedroom Apartment
98.4m² of living



Two Bedroom + Study Apartment
94.7m² of living



Three Bedroom Apartment
128.5-133m² of living





EXPERIENCE SOMETHING SPECIAL
EXPERIENCE INNER CITY LIVING
EXPERIENCE MONARCH

Monarch delivers you a central location with style and sophistication to match. From your front door, you can take a walk to the lively buzz of Dickson, O'Connor or Lyneham. Or you can choose to stay home in your beautifully appointed apartment featuring stone bench tops, European appliances, large balconies for entertaining, secure parking and private lift access. Work away tension in the gym and lap pool, or just relax by the reflection ponds in the landscaped gardens.

Each apartment from the first level to the top shares an entry foyer and lift access with just one other unit. No long, hotel style corridors here. This innovative design feature allows most apartments to have balconies at each end and get far more access to sunlight and cross breezes than a traditional, single aspect apartment. Architecturally designed interiors maximise the feeling of space through having very limited hallways and strong attention to detail. This means that each apartment not only looks great, but is great to live in as well.

Security and peace of mind were designed in, not added on. Imagine stepping out of your car in the security accessed carpark beneath the building, and walking just a few steps to your lift. Individual security passes enable residents to only access their own floor and foyer, as well as providing entry to the podium level and state-of-the-art facilities including an in-house gym and swimming pool. Provision of an outdoor living terrace encompasses gardens under a canopy of trees and includes abundant water features.

Completion expected to take place in mid 2006.